



## In this issue

The East Side Curve P.2

Bumble Bee Garden P.2

What's On? P.3

## Message from the Mayor

2022 has been a challenging year for many as we have all been adjusting to living with covid. Thankfully, something like normal life has returned for the majority and looking back over 2022, it has also been a very busy and varied year. The East Cowes community has had the opportunity to take part in events celebrated and commemorated throughout the nation.

Early in the year, the Community Cinema launched at the Town Hall. Run by volunteers once a month, this is a great evening out and a wonderful way to meet up with friends in the heart of our town. I hope many more of you will find a film to grab your interest over the year ahead (see inside for details of films coming up soon). Work pressed on throughout the winter on the community hub – or The East Side Curve as we know it now!

April and May saw commemorations of the 80<sup>th</sup> Anniversary of the Blitz and marked the role of the ORP Blyskawica in wartime East Cowes. The new monthly market got going at the Town Hall too. This is now a regular feature in the town. From January, this will be held on the second Saturday 10am-2pm. Stalls feature local crafts and gifts, fresh produce and plants, bakery goodies and treats and much more! In June, many events took place to celebrate the Platinum Jubilee of Queen Elizabeth II. The Town Council organised the Picnic in the Park event

at the Jubilee Recreation Ground which featured live music and entertainment, planting the Jubilee tree and refreshments. The celebrations were shown on the big screen in the Town Hall. The Beacon was lit on the Esplanade. Local school children were presented with crowns and commemorative coins.



Over the summer, The East Side Curve was completed after months of hard work by contractors and staff. This wonderful new facility opened on 11<sup>th</sup> August. It is staffed from 9am-5pm Monday to Friday and Saturday 9am-1pm. There are numerous activities and groups running with more planned for 2023. Library activities include Rhyme Time, Story Time, Creative Writing and a Book Club. There is also Adult Community Learning on offer and East Cowes Town Crafters. The meeting room is available for booking at other times. August was a very busy month with Cowes Week events including a royal visit and the officers of HMS Severn, Armed

Forces Day, and the Indonesian Day celebration. Sadly, September saw the passing of our beloved Queen Elizabeth II. A condolence book was provided in The East Side Curve and the funeral was screened enabling the local community to come together. The Community Orchard consisting of 30 mixed fruit trees was planted towards the bottom of Jubilee Recreation Ground in October. This was a joint project with Red Funnel who donated the trees. Going into the autumn the Town Council joined the Warm Spaces initiative offering our new building as a warm and welcoming place to meet. The annual public consultation took place at the end of October. Thank you to those of you who took part in person or online. This information feeds into the budget process for next year.

On 3rd November, I accepted the resignation of Cllr Simon Walker who is retiring due to ill health. I would like to thank him for his many years of dedicated service and wish him well for the future.

Wishing you all a safe and joyful festive season.

*Cllr Tracy Reardon  
Mayor of East Cowes*

# East Cowes Community Library

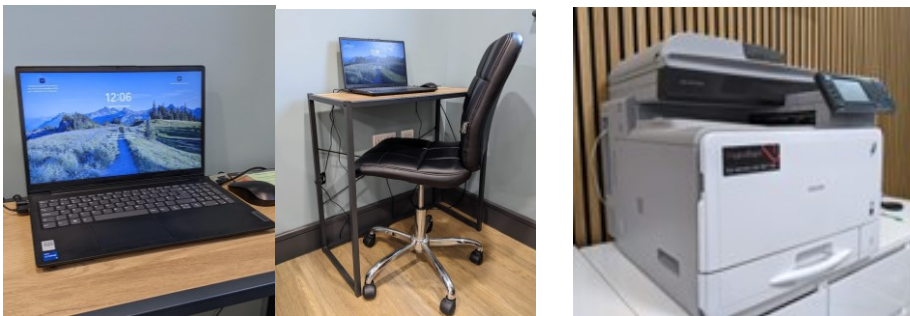
## OPENING HOURS

Monday to Friday 9.00am-5.00pm, Saturday 9.00am-1.00pm

Many of you have already visited The East Side Curve and become members of the library. We have a good selection of books to browse and borrow and you can order books from the Isle of Wight County Library Service. You are welcome to pop in and read the paper and enjoy our comfy seating! Hot drinks are available too!



There is a public access laptop and free public wifi. Printing and A4 photocopying services (small charge applies). Regular organised day time activities include Rhyme Time, Story Time and Creative Writing and in the evening you can join a monthly reading group.



You will also find a good selection of games as well as local information and tourist leaflets. Our receptionist is on hand to deal with your enquiries and can direct you to sources of help and support.



Town Hall and The East Side Curve contact number **01983 299082**

For email enquiries contact [clerk@eastcowestowncouncil.co.uk](mailto:clerk@eastcowestowncouncil.co.uk)  
or specifically for the library [library@eastcowestowncouncil.co.uk](mailto:library@eastcowestowncouncil.co.uk)

**THANK YOU** to all who have contributed to the **TERRACYCLE** schemes we have signed up for over the last year. The points generated have been donated to provision of essential help in communities provided by the 'British Red Cross'



Tuesday December 6<sup>th</sup> 10.00-12.00  
**Scam Awareness Workshop** at The East Side Curve. To book call 01983 301693 or email [digital@ageukiw.org.uk](mailto:digital@ageukiw.org.uk)

## Bumble Bee Garden



Bumblebee Park, is a place very close to my heart and I'm very aware and grateful for all the help that went into creating it. I also love the joy that it brings to children everyday.

I had a beautiful plan that started over a year ago to put a new piece of equipment into the park. (A space that was left especially for an extra piece of equipment). I wanted it in this year because it was the year that equalled the number of years Keziah lived. She was six when she was murdered and has been gone 6 years.

We've worked really hard and have had support from GKN and another company who wishes to remain anonymous. We have also had people walk up Mount Snowden to help too. We are still about £5000 short but I have no less conviction that we will get it done!! I recognise that it won't be in time for this special year but it will still make children smile 😊.

We have a funding page going and the money already made is held by the Town Council. If you can think of a way to make money or can add some money to the funding page it would make my Christmas that little bit brighter.

Here is the picture of the piece of equipment and the fundraising page address. Hooray for children and especially our East Cowes children.

Thank you, love Keziah's Mummy xx

<https://kezis-kindness-playpark-appeal.raisely.com/>





## CHRISTMAS EVENTS

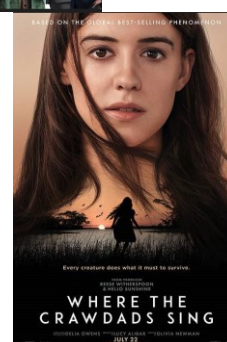
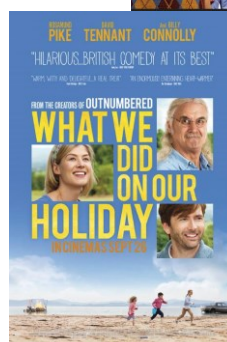


**ISLE OF WIGHT RADIO  
 TOY APPEAL DROP OFF POINT**  
**The East Side Curve**  
 New gifts for ages 0-16 accepted  
 until 9th December



## Treat Yourself to a great night out East Cowes Community Cinema

**PROGRAMME Jan-March 2023**



**14th January THE PHANTOM OF THE OPEN (12A)**

**11th February WHAT WE DID ON OUR HOLIDAY (12)**

**11th March WHERE THE CRAWDADS SING (15)**

**WHERE?** East Cowes Town Hall

**WHEN?** Second Saturday of the month 6.45pm  
 (except August and December)

**COST?** Tickets £4 or pay £12 for a group of 4

**TICKETS?** Purchase in advance from The East Side Curve or on  
 the door subject to availability. Card payment now available.

**Run by volunteers**

**If you'd like to be involved please get in touch!**

## Regular Events in 2023

### Monthly Community Market

**In the Town Hall on the second Saturday 10am-2pm**

Stalls include local crafts and gifts, fresh produce and plants,  
 bakery goodies and treats and much more.....

### Charity Coffee Mornings

**Tuesdays 10am-12noon in The East Side Curve.** Pop in for a  
 drink and a cake, find out more about what these organisations  
 do.

**13th December 2022**

**17th January 2023**

**7th February 2023**

**Samaritans**

**RNLI - Cowes**

**IOW Defibrillators**

## Budget for 2023/2024

The Town Council looks at the results of the public consultation each autumn and then considers the priorities for the year ahead. The Town Council is responsible for all the following:

- ❖ Town Hall
- ❖ The East Side Curve
- ❖ East Cowes Community Library
- ❖ Esplanade Toilets
- ❖ Paddling Pool
- ❖ Esplanade Play Area
- ❖ Esplanade Green Spaces
- ❖ Tennis court and car park
- ❖ Bumble Bee Garden
- ❖ Victoria Recreation Ground
- ❖ Outdoor Gym
- ❖ Jubilee Recreation Ground
- ❖ Cadets Walk Garden
- ❖ Multi Use Games Area
- ❖ Skate Park

With so many facilities and recreational spaces in the town a large proportion of the budget goes towards maintaining these. Going forward, the Council is keen to generate income by encouraging full use of the Town Hall and The East Side Curve by groups and occasional hirers so that the precept (East Cowes element of your council tax) can be kept as low as possible.

## Warm Spaces

From the **1st November** why not join us in our warm, friendly and comfortable space that is on your doorstep.

Read a book  
or  
newspaper

Enjoy a free  
coffee, tea or  
soup

Have fun playing  
games

Chat or have  
some peace  
and quiet

Open Monday to Friday 9am to 5pm

Community activities permitting

East Cowes Town Council

Town Hall, York Avenue, East Cowes. PO32 6RU

(01983) 299082 [www.eastcowestowncouncil.co.uk](http://www.eastcowestowncouncil.co.uk)

## Town Council Meetings

Dates for the coming 12 months are set at the annual meeting. Full Council meetings usually take place on the 3<sup>rd</sup> Thursday at 6pm. Facilities Projects and Events Committee meetings take place bi-monthly on the first Thursday of the month at 6pm. Additional meetings are set as required for the Planning Committee and the Human Resources Committee.

Agendas are available 3 clear days before on the Town Council website, Facebook Page and in the noticeboards at the Town Hall, Parkside Pavilion and Bumble Bee Garden Play Area.

### CHRISTMAS CLOSURE DATES

**Town Hall and Offices closed 24<sup>th</sup> Dec to 2<sup>nd</sup> Jan**

**The East Side Curve and Public Toilets closed on 25<sup>th</sup> Dec to 2<sup>nd</sup> Jan**

## HOW TO CONTACT THE TOWN COUNCIL

**The Clerk's Office**  
**East Cowes Town Hall**  
**York Avenue**  
**East Cowes**  
**Isle of Wight**  
**PO32 6RU**

**Tel: 01983 299082**

Email: [clerk@eastcowestowncouncil.co.uk](mailto:clerk@eastcowestowncouncil.co.uk)  
Website: [www.eastcowestowncouncil.co.uk](http://www.eastcowestowncouncil.co.uk)

## SEND US YOUR COMMUNITY NEWS!

Contributions to this newsletter from the community are welcome. If you are involved with a local group, project or event please email an article and a photo to: [assistantclerk@eastcowestowncouncil.co.uk](mailto:assistantclerk@eastcowestowncouncil.co.uk)

Copies of the newsletter are delivered to every household in East Cowes and available from the Town Hall lobby and The East Side Curve as well as on the Town Council website and via Facebook.

**DISCLAIMER:** This newsletter is produced by East Cowes Town Council. All articles are taken in good faith. We cannot take any legal queries resulting from these. Submitted articles do not necessarily reflect the views of the Town Council. We reserve the right not to print submitted articles.